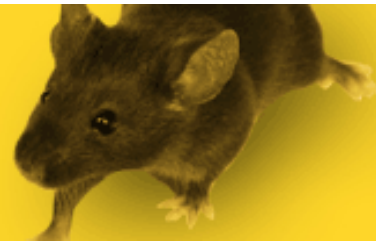


The Victor logo is displayed in a bold, red, sans-serif font. The letter 'V' is significantly larger than the other letters and features a small mouse silhouette within its upper left curve.

Victor® Easy Set Snap Mouse Trap

Instructions

Note: Remove Staple Holding Locking Bar To Wood Base.

To Set & Place the Mouse Traps:

1. Pull Back Bow. Hold Down With Thumb.
2. Lift "Cheese" Pedal to 45° Angle, Engage Locking Ba (S=Sensitive/F=Firm)
3. Place Trap(s) With "Cheese" Pedal Facing Wall.