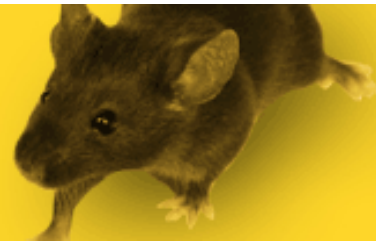


The Victor logo is displayed in a bold, red, sans-serif font. The letter 'V' is significantly larger than the other letters and features a small mouse silhouette within its upper left curve. The word 'Victor' is positioned to the right of the 'V'.

Victor® Snap Mouse Trap

Instructions

Note: Remove Staple Holding Locking Bar To Wood Base.

To Set & Place the Mouse Traps:

1. Place Bait in Bait Pedal.
2. Pull Back Bow and Hold Down With Thumb.
3. Engage Locking Bar On Curved Portion of Bait Pedal.
4. Place Trap(s) With Bait Pedal Facing Wall.